

## Modular Structure

### Modular Weigh bridge System

Designed with a modular system for easy assembly efficient shipping & adjustment of size.

Aczet's M.S. structure provides full protection from rust & corrosion, reducing maintenance costs & are made with heavy duty.

Aczet weigh bridge is suitable for both above ground & pit type application with the ability of being relocated at a later stage with ease.

### Module Structure

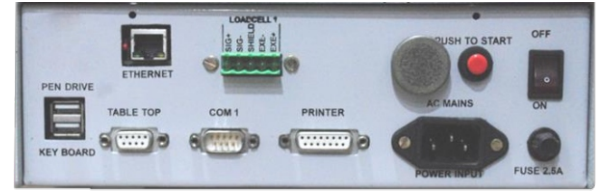
Aczet modular design reduces installation time & allows the weighbridge to expand in length with additional deck modular reaching up to 24 meters.

Model	Max	Readability	Nos. Of Load cell	Platform Size
WB-20 T 7.5	20 Ton	5 kg	4/6	7.5 x 3 mtr.
WB-30 T 7.5	30 Ton	5 kg	4/6	7.5 x 3 mtr.
WB-30 T 9	30 Ton	5 kg	6	9 x 3 mtr.
WB-40T 9	40 Ton	5 kg	6	9 x 3 mtr.
WB-50T 12	50 Ton	5 kg	6	12 x 3 mtr.
WB-60T 16	60 Ton	10 kg	6/8	16 x 3 mtr.
WB-60T 18	60 Ton	10 kg	6/8	18 x 3 mtr.
WB-80T 16	80 Ton	20 kg	6/8	16 x 3 mtr.
WB-80T 18	80 Ton	20 kg	6/8	18 x 3 mtr.
WB-100T 16	100 Ton	20 kg	6/8	16 x 3 mtr.
WB-100T 18	100 Ton	20 kg	6/8	18 x 3 mtr.
WB-120T 18	120 Ton	50 kg	8	18 x 3 mtr.

Customised Platform size can be available on request

#### Junction Box:

Protection Class	IP 65 / 66
Surge Protection	Surge arrestors provided within junction box
Connection Type	Terminals on PCB mounted inside the JB.
MOC	ABS / Stainless Steel / Mild Steel



**Typical Arrangement Of Weighbridge System.**

**STANDARD PRINTOUT FORMAT**

```

----- Weigh Track -----
ACZET Pvt. Ltd.
-----
In Date : 27-09-16      In Time : 10:10:39am
OutDate : 27-09-16      OutTime : 04:39:05pm
No       : 351
Chl. No.: 135
Party Name : KALPATARU Ltd
Material   : Steel
Vehicle No.: MH02AZ4027
Vehicle Type : Truck
Gross Wt   : 38950kg
Tare Wt    : 12050kg
Net Wt     : 26900kg
-----
Remark    : OK
    
```

- Approved by Legal Metrology Dept. Of Govt. Of India.
- Intelligent Terminal. No PC required.
- PC key board for data entry.
- RED LED display for weight indicator
- Backlit LCD display 2 line and 26 characters for operating instructions.
- Non volatile memory upto 1,00,000 transaction
- Micro Controller based.
- Full digital Calibration.
- Auto Zero Tracking.
- Remote Jumbo Display connectivity.
- Report generation customer wise, Sr. No. wise etc.
- Provision for Plain & Pre-Printed Stationary.
- Software For Weighbridge
- Indicators are certified by CIMFR, Dhanbad with marking Ex 'ia'

**Software for Weighbridge:**

Our standard weighing software is the latest international connoisseur added with multidimensional features such as

- a) Statistics
- b) Summary Reports.

**Customize Software Also Can be Provided on Request.**

## Indicator

Intelligent Terminal Technical Specifications	
Microprocessor	8051 derivative.
Clock	18 MHZ.
Memory	1,00,000 transaction weighment data.
Power Supply	SMPS type with EMI/RFI filter and Spike Suppressor.
A/D Converter	Sigma Delta type 24BIT ADC
Conversion Speed	20Hz.
Load Cell Excitation	7V @ 300mA (up to eight load cells of 350 ohms each).
Signal/Unit weight	1 micro volt per division of weight (unit weight)
Keyboard	101-key Keyboard IBM PC AT type.
Printer Port	Centronics compatible parallel port / USB Cable.
Printer	EPSON LX 800/ LX 300 or TVSE make
Serial Port	1 number RS-232C type port is available (For computer interface or remote display interface)
Display	16 char X 2 lines LCD display with backlight for data entry and display of weight, RTC.
Remote Display Port	9-pin D-shell female connector for optional ½"/ 1"/2.3"/ 4" 6-digit bright red LED display.
USB Port	USB Port Configured for pen drive.
Ethernet port	RJ 45 port (Ethernet port to connect with a system)
Consolidated Reports	Date wise, RST wise and all 5 entries wise for full & pending report.
Input Voltage	110 V -230 V AC @ 50 Hz/ 60 Hz.
Power Consumption	10 VA (approx.).
Environment	Operating Temp: 10°C to +55 °C Celsius. Humidity : 0 to 95% RH non-Condensing.
Dimensions (W x D x H)	250 x 260 x 80 mm
Weight	2.8 Kg. (approx)

"Indicator with Ethernet Port" is designed to fulfill needs of networking.

As we all know that networking of computers has changed our lives tremendously. In the similar way networking of one or many weight indicators with computer's Lan (Ethernet) port, will further simplify the data processing needs of an industry.

Indicator with Ethernet port can facilitate weight or data records integration with computer or server using LAN connectivity.

**Salient Features**

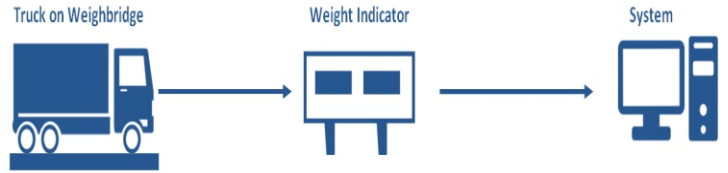
- LAN connectivity
  - Wired
  - Wireless using a router
- Long distance transmission
- Eliminates RS232 port compulsion at PC
- Provides easy solution to integrate indicator data with SAP/ERP
- Field settable IP address and other settings.
- Connecting multiple AND's on a single network.

**One of the three factory set modes of data sending, can be opted as per requirement :**

## Indicator with Ethernet port

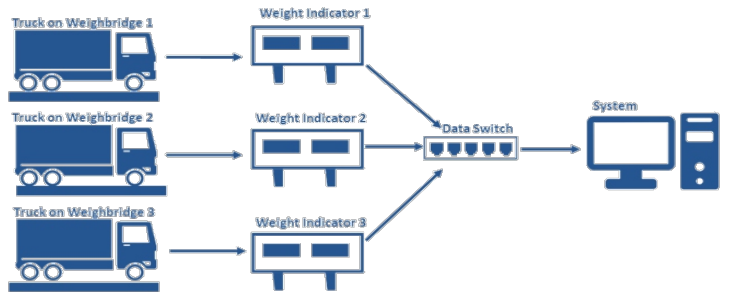
**Mode 1 Description : Usage and Benefit**

Continuous weight data transmission at field programmable baud rate parity.  
 Continuous weight to be used by any software application  
 Distance upto 100 meter and extended using switch can be obtained  
 No need to demand RS232 port on new generation PC, which comes without RS232 port now-a-days



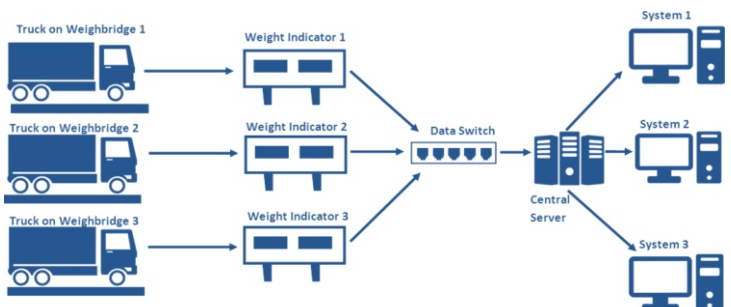
**Mode 2 Description : Usage and Benefit**

Predefined request commands to be sent to Ethernet port, to get request information in turn like weight, ticket, report etc.  
 For usage with computer application which is being developed by third party



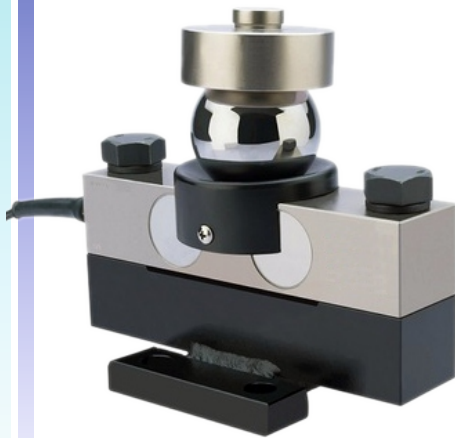
**Mode 3 Description : Usage and Benefit**

Embedded program customized to run with "Weighment Data Collector" software.  
 Capability of multi-tasking for weighments as well as periodic data to "WDC" on periodic basis.  
 Internal tracking to keep record of sent and unsent data and providing each data to "WDC" without fail.  
 Facility to uploaded configuration to WDC. Facility to save configuration uploaded by WDC.



# Load cell Double Ended Shear Beam

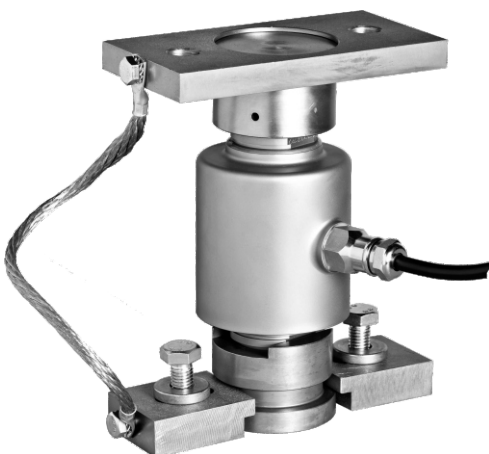
(Analog / Digital)



Accuracy class	OIML R60 C3
Output sensitivity ( = FS )	2.0, ± 0.002%
Maximum capacity ( Emax )	10, 20, 30, 50 T
Combined Error	≤ ± 0.0230% FS
Repeatability	0.05% FS
Safe overload	150% FS
Ultimate overload	300% FS
Zero balance	< ± 1.5 % FS
Excitation, recommended volt.	5 ~ 12 vdc
Excitation maximum	18 vdc
Input resistance	750 ± 10 Ω
Output resistance	700 ± 7 Ω
Insulation resistance	≥ 5000 ( at 50VDC )
Compensated temperature	-10 ~ +60°C
Operating temperature	-20 ~ +65°C
Storage temperature	-40 ~ +90°C
Element material	Nickel plated alloy steel
Cable	12 m (Ø6 mm 4 core Shielding cable)
I.P. Class (acc. to EN 60529)	IP-67 / IP -68
CMIFR approval	Ex ia IIB T6

# Compression Load Cell

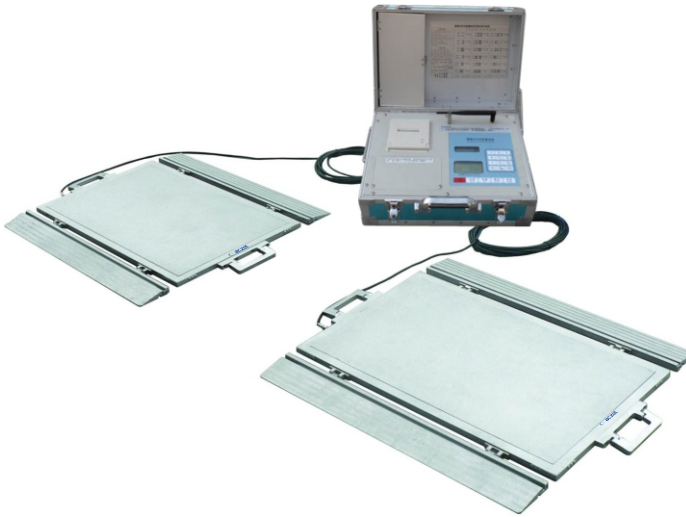
(Analog / Digital)



Accuracy class	OIML R60 C3
Output sensitivity ( = FS )	2.0 ± 0.02% mV/V
Maximum capacity ( Emax )	10, 20, 25, 30, 40, 50 t
Combined Error	≤ ± 0.023% FS
Repeatability	0.05% FS
Safe overload	150% FS
Ultimate overload	300% FS
Zero balance	≤ ± 1.0 % FS
Excitation, recommended voltage	5 ~ 12 vdc
Excitation maximum	18 vdc
Terminal resistance, input	710 ± 7 10Ω
Terminal resistance, output	700 ± 7Ω
Insulation impedance	≥ 5000 ( at 50VDC )
Temperature range, compensated	-10 ~ +40°C
Temperature range, operating	-35 ~ +65°C
Element material	Stainless steel & Hermetically Sealed Lightning Protected
Anti Lock	Anti rotation lock load cell
I.P. Class (according to EN 60529)	IP-68
Cable	12 m (Ø6 mm 4 core Shielding cable)
CIMFR Approval	Ex ia IIB T6

### Application

Truck Scales  
Hopper Scales  
Tank Scales  
Silo Weighing



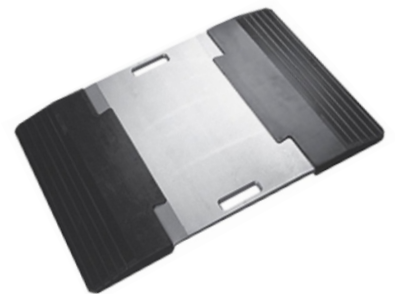
### Features :-

- Easy to carry portable type.
- High accuracy & Slim size.
- Easy-to-measure small/large size vehicle for overload.
- Double LCD Display with Backlit.
- RS 232 Serial Port for PC Connectivity.
- 24 bit high-conversion ADC, conversion velocity is up to 1000/s
- Micro Printer is embedded, the printer ticket contains date, time, truck no, ticket no, axle weight, truck weight, Overload and executive enforcement organization.
- Key Pad : Membrane Touch
- Possible to display weight of per axle and total weight.
- Outstanding water resistant and Vibration-proof effect.
- Built-in Clock & enter the truck Number Max 12 Digits. (Alfa Numerical)
- Integral flat plate construction, high frequency in dynamic response, and high precision.
- Applied special treatment, offering high protection class that are suitable for all kinds of environments.
- Adopted special material in aero-industry, with good anti-over loading ability.
- Optional Rubber Ramp Available

Capacity	L2	L1	L	W2	W1	W	H
10 ~ 20T	714	765	911	419	468	722	18
20 ~ 40 T	898	950	1098	499	550	804	21.5

## Portable Axle weigh Pad

WB - PT Series



Optional With Rubber Ramp

Model	Unit	WB -15PT	WB -20PT	WB -30PT	WB -40PT
Capacity Per Pad	Ton	15 Ton	20 Ton	30 Ton	40 Ton
Capacity Per Axle	Ton	30 Ton	40 Ton	60 Ton	80 Ton
Readability	kg	10 kg	20 kg	20 kg	50 kg
Output Sensitivity	mv/v	1.2mV / V, ±0.1mV/V			
Non Linearity	%FS	0.3%			
Accuracy Dynamic Mode	%FS	≤20%FS, ±3% F.S at <5km/h, >20%FS, ±5% at <5-10km/h			
Accuracy - Static Mode	%FS	1%FS			
Creep (30min)	RO/30min	0.08%RO			
Maximum excitation voltage	V	9-15VDC			
Operating temperature range	°C	-20 to +60°C			
Safe overload	%FS	150%			
Ultimate overload	%FS	250%			
Corner Error	%FS	0.5-1.5%FS			
Output Resistant	Ω	667, ±10Ω			
Insulation Resistant	Ω	≥ 1000M Ω (100VDC)			
Weigh Pad Material		Aluminum			
Weigh Pad Size (LxWxH)	mm	765 x 468 x 18 (±5mm)		950 x 550 x 21.5 (±5mm)	
Active Surface Size (LxWxH)	mm	714 x 419 x 18 (±5mm)		898 x 499 x 21.5 (±5mm)	
Weight of weigh pad	kg	Approx 28kg			
Protection Class for load cell		IP 65 Class			
Connection		10 m. Cable			
weight of Indicator	kg	Approx x 10.3 kg			

### Products Specification :

#### Features :

- Light in weight, and convenient transportation.
- Integral flat plate construction, high frequency in dynamic response, and high precision.
- Applied special treatment, offering high protection class that are suitable for all kinds of environments.
- Adopted special material in aero-industry, with good anti-over loading ability.

#### WBPT Wireless Weighing Pad :

- Assembled with rubber handles, avoided destroying of the handles.
- Mounted with connector and protection block, easy for changing of cables.
- Completed with dovetail approach, offering tight connection of the approach and the scale.
- Easy for loading on/off of the vehicles.



## Wireless Portable Axle weigh Pad

WB - WW Series

Model	Units	WB 15WW	WB 20WW	WB 30WW
Capacity Per Pad	Ton	15 Ton	20 Ton	30 Ton
Capacity Per Axle	Ton	30 kg	40 Ton	60 Ton
Readability	kg	10 kg	20 kg	20 kg
Wireless Frequency	Mz	470MHz		
Wireless Distance	mtr	Min. 1000m default		
A/D Conversion Rate	....	>50 times / seconds		
Operating Temp. Range	°C	-20 + 60°C		
Safe overload	%FS	150%		
Ultimate Overload	%FS	250%		
Operating Humidity	%FS	< 85% RH under 20		
Battery Life	Hours	≥ 50 hours		
Sub-Time	Seconds	<5 Seconds		
Weigh Pad Size (LxWxH) mm	mm	700 x 400 x 21		

• All Dimensions are subject to change without notice •



### Main Applications

- Suitable for Dynamic Axle Weigher (Max. axle count 99 and max. speed 5km/h).

### Features

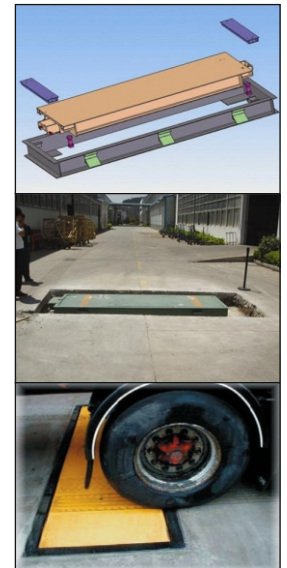
- Applicable for occasions that have no high precision requirement, such as overload detection, logistics loading, construction site, mining area, good yard etc.
- Occupying small space
- Dynamic Axle Weigh
- With a special designed over for easy installation and maintenance.
- Load Cell : Protection IP 67
- Speed : Medium accuracy
- Accuracy Class -I
- Load to be measured : Axle load & gross vehicle weight (GVW)

### Main Features

- EMC design with high anti-jamming capability, suitable for industrial environment.
- 16-bit green VFD digit display screen for English character and digit display.
- English keypad for Menu&Shortcut operation with key tone.
- Special filtering algorithm for ensuring the weighing stability and accuracy when there is strong vibration on the load receptor, and the rapid response capability when the weight signal changes.
- Auto-locking, Key-locking, Key-unlocking, Digital Setting&Calibration and I/O Testing functions available.
- 2 Optional communication ports for linking to IPC/PLC, remote display & operation terminal, serial printer and wireless module.
- Standard MODBUS communication protocol and support industry configuration software, e.g. iFix.
- The present axle weighing record can be printed automatically and manually.
- The historical axle weighing records can be queried and printed.

### Technical Specifications

- Power: AC220V±15%, 50/60Hz, Max. 15W.
- Loadcell Excitation Voltage: DC10V.
- Weighing Signal Input Range: 0~25mV.
- Max. Connection Quantity: 8 Loadcells (350Ω).
- 24-bit Σ-ΔADC; Max. Sampling Frequency: 400Hz; Non-linearity: 0.005%FS.
- COM1 : RS232. COM2 Optional: RS232/RS485/RS422/Ethernet modules.
- Outline Dimension (W×H×D) :164 × 82 × 188 mm.
- Cut Dimension (W×H) : 153 × 77 mm.
- Service Temperature: -25°C~+40°C
- IP Grade : IP50.



Optional Indicator

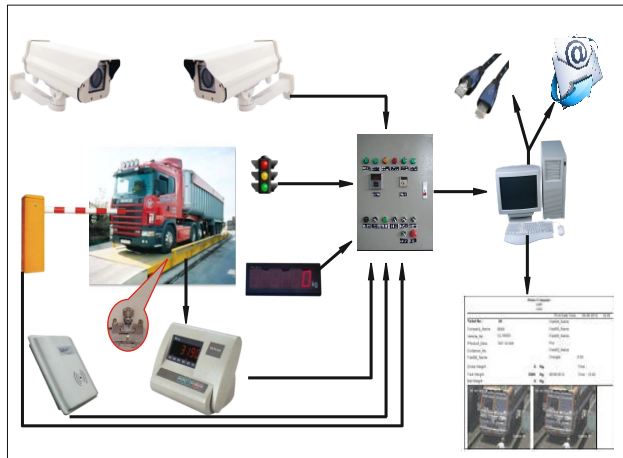
## Weigh in Motion Weighbridge

WIM Series

Model	WIM-20	WIM-30	WIM-50
Platform Size (WxL)	3 x 0.8 m	3.0 x 0.8 m	3.2 x 2.2 m
Capacity Per Axle (T)	20 Ton	30 Ton	50 Ton
Total Weighing Cap.	100 Ton	160 Ton	200 Ton
Graduation	10 kg	10 kg	20 kg
Verification Class	Class I		
Dynamic Precision (Axle)	At speed ≤5 kmph, 2% of GVW		
Safe overload	150% F.S		
Weighing speed	≤5km/h		
Power	230 Vac, 50Hz, Max 15W		
No. Of Loadcells	4	4	4

## Introduction :

The system can manage the ordinary weighing in the condition of unattended operation and store and print the video and pictures of the weighing.



## Standard Function :

- Weighing indicator : Collect the weighing from the truck, control the whole system and upload the data to the upper monitor.
- Infrared screen : Functioned to auto recognize the truck is completely on the platform.
- Card reader : with card-slow function and auto-recognize and check the truck information.
- Upper monitor : Collect truck weight information, collect other information of truck by card reader, monitor and picture truck by camera, store and print all these information.
- Traffic light : Indicating the truck that weighing is done or not.
- Monitor Camera : Full time monitoring the weighing trucks and collect pictures.
- Score board : indicating truck weighing information Hardware.
- Software control : Video cameras, card reader.
- Weighing indicator : infrared screen, indication lamp, road rod, Jumbo Display.

## Technical Parameter :

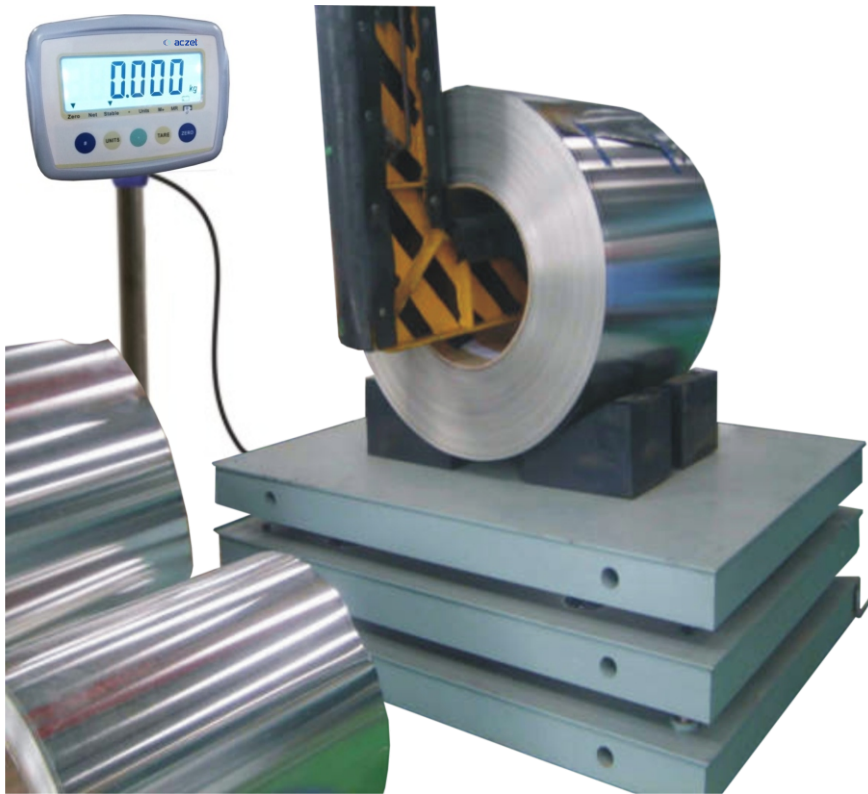
- Supporting 4-way video input
- Supporting WLAN function
- Sea quantity of storage
- Nonlinear correction function
- Supporting mobile short-message warning
- Automatic/Manual angle difference correction
- Capability of connecting 20 sensors at most
- Supporting local storage and transmission, resuming at break-points
- Supporting cable or wireless real-time transmission
- User Rating management function :  
Operator and manager
- Digital display, storage, query and output printing
- Digital sensor signal real-time monitoring and anti-cheating function.
- Timing off function
- Self-definition of weight note format
- Calibration error correction function
- Holding 1-way microphone input
- Software has anti-cheating function
- Automatic weighting, accumulating and counting down
- WEB Server function, supplying remote monitor
- Supporting remote commissioning of network, and remote upgrading of Software
- High accuracy A/D conversion, verification intervals is 5000
- Output modes including profibus-DP, modbus, etc. for selection
- Ethernet interface, for networking and data transmission.

## Unmanned Operated Weighbridge

WB - UM Series

Model	WB-30T UM	WB-40T UM	WB-50T UM	WB-60 T16 UM	WB-60 T18 UM	WB-80T UM	WB-100T UM
Capacity	30 Ton	40 Ton	50 Ton	60 Ton	60 Ton	80 Ton	100 Ton
Readability	5 kg	5 kg	5 kg	10 kg	10 kg	20 kg	20 kg
No.of Loadcell	4/6	4/6	6	6/8	6/8	6/8	6/8
Platform Size	9 x 3 mtr.	9 x 3 mtr.	12 x 3 mtr.	16 x 3 mtr.	18 x 3 mtr.	16 x 3 mtr.	18 x 3 mtr.





It is an automatic measuring instrument with the controlling core of micro processing. Having the buffer, it is made of the steel and concrete. It can also be manufactured according to the customer's needed length and dimension. It is convenient maintain the whole scale. It has wide temperature range and strong impact resistance. It is stable and reliable. It is specially designed for metallurgy industry, so it is widely used to weigh the metal material in production, procession, trade and storage. Being the integrated body, it is easy to remove. It is made up to steel platform, spring buffer, high accurate load cell indicator and water proof junction box. the helical and compressing spring is sued to reduce the force imposed on the scale, so the Load cell is efficiently protected and has a long service life. With the strong impact resistance, high accuracy, direct display and quick reading, it has the quality of peeling, accumulating, printing and protecting the datum when the power is shut off. With it can meet different customer's needs.



Built-in Printer Indicator

## Steel Scale for Coil Weighing

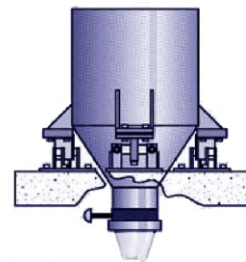
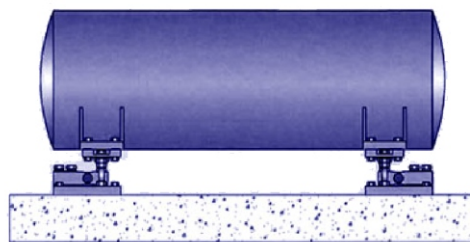
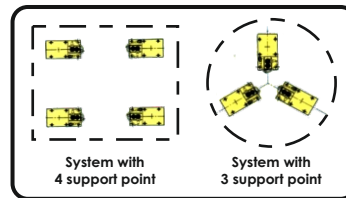
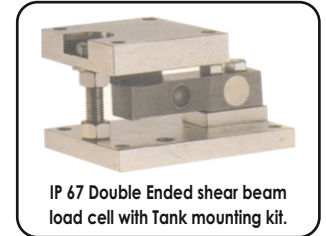
WB - S Series

Model	WB 10S	WB10SW	WB 20S	WB 20SW	WB 30S	WB 30SW
Capacity	5 - 10 Ton	5 - 10 Ton	20 Ton	20 Ton	30 Ton	30 Ton
Readability	2 kg	2 kg	5 kg	5 kg	5 kg	5 kg
No.of Loadcell	4	4	4	4	4	4
Platform Size (m)	1.5 x 2m	1.5 x 2.5m	1.5 x 2m	1.5 x 2.5m	1.5 x 2m	1.5 x 2.5m



**Features :**

- No moving parts.
- The most reliable strain gauge load cells.
- High Accuracy.
- Practically no maintenance.
- Standard electronics will have relay outputs 4-20 mA isolated current, set point facility.
- Absolutely cost effective.
- Expandable control output to use as batch controller.
- Actual Weight on power on Facility.



Intrinsic Safe Load Cell, Weight Indicator & Composite Circuit of Electronic Scales are safe for use in Hazardous area Zone 1 & 2 and Gas group IIB Atmosphere certified by CIMFR, Dhanbad with marking Ex 'ia'

## BIN / Silo / Hopper / Tank Weighing Systems

TN Series

Model	TN 5	TN 10	TN 15	TN 20	TN 30	TN 50	TN 100	TN 150	TN 300	TN 500
Capacity	5 Ton	10 Ton	15 Ton	20 Ton	30 Ton	50 Ton	100 Ton	150 Ton	300 Ton	500 Ton
Least Count	2 kg	5 kg	5 kg	5 kg	10 kg	10 kg	20 kg	50 kg	100 kg	100 kg
Load Sensor	Presiston Strain Gauge Load Cell									
System Accuracy	± 1% of F.S.									
Zero Adjustment	Adjustment by Soft Touch Keypad									
Indicator	5 Digit, 12.5mm LED Display									
Power Supply	230V, 50Hz, ±10%									
Temperature Range	5°C to 50°C									
Enclosure	1) IP-55 for Field Mounted 2) IP-54 for Control Room Housing									
Load Cell	Hermetically Sealed (IP-67class)									



Billet weighing system is customized to fit in to existing roller table. The system is capable to accurately record the weight of moving billet with suitable stopper arrangement and lifting for high temp hot billets. Also the system can be integrated with PLC to record the billet weight in synchronization with PLC. We also provide the customized software application to monitor the billet production process. Fully integrated billet weighing system used to measure the hot and cold billet in static and dynamic mode.

## Billet Weighing System

BWS Series

Model	BWS Series
Design	Weigh Frame Suitable for Roller Table
Capacity	Up to 100 ton
Resolution	1/2/5/10-100 kg/User Selectable
Zero / Tare	Auto Zero /Auto
Controller	SAM 3 X / ARM
Memory	In built with RTC
Communication	RS 232 / RS 485/ Profibus / Modbus/RF
Input/Output	Digital / Analog 4-20mA
Software	Dot Net / MS Access / SQL



The Torpedo Ladles Cars (TLCs) in steel Plants Serve as capacity buffers of hot metal to the blast furnaces and as feed buffers of hot metal to the steel making shopes.

Efficient co-ordination of torpedo ladles is of paramount importance to any steel plant for minimizing hot metal dumping importance to any steel plant for minimizing hot metal dumping and ensuring optimum supply of hot the steel making shops.

#### Benefits

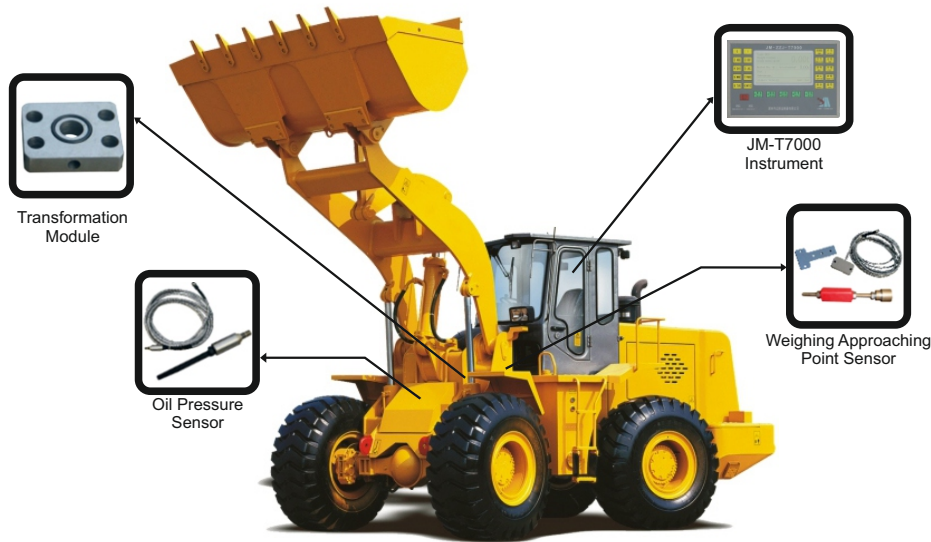
Information exchange be tureen blast furhaces, steel making shops & logistics departments to enable decision making & improved co-ordination

Optimum buffer availability at blast furnaces & steel making shops.

## Torpedo Ladle Car Weighing System

TLC Series

Model	TLC Series
Design	Pit Less
Capacity	Up to 800 Ton
Resolution	100 kg / User Selectable
Controller	ARM Based
Memory	In built with RTC
Communication	RS 232 / RS 485 / Profibus / Modbus / RF
Input / Output	Digital Analog 4-20mA
Software	dot Net / MS Access / SQL



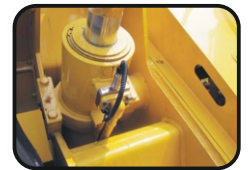
Cab Instrument Console



Position sensor and slider



Sensors



Asphalt adapter block and sensor

### Product Profile :

The product is weighing and metering equipment that combination the user needs of practical application to weigh bulk material, it can be used for vehicle loading measurement, Blackout measurement, earth measurement. It consists of sensors and weighing instrument, can dynamically measure, also stately measure, weighing instrument can print the date, time display peeled, zero adjustment, storing the weight date and information and other, when the product is weighing it doesn't affect the m\normal loading work, if operate according to prescribed procedures, accuracy error can be controlled within 1%, both imported and domestic various types of loaders can be installed this product.

Usage Range : The product is widely used in the places such as railway goods yard, port, dock, gravel plants, mines, coal mines, coal fields, coal preparation plant, mining and so on, where there are massive bulk materials and must limit carries and measurement when the materials are shipped by the loaders.

### Features :

- Controlled the microprocessor, high intellectualized degree, small volume, and beautiful appearance.
- The weight data can be output through the serial port, USB connection, also can through GPRS
- Wireless transmission (Optional)
- Bilingual keyboard can input Chinese character, at the same time keys was equipped
- With sound and light automatic reminders to prevent the disoperation.
- Apply Dynamic sampling and fuzzy algorithmic, dynamic calibration and dynamic weighing can be achieved.
- Multi-mode dual-circuit detection, data accuracy, high precision weighing
- There is no need to stop, the automatic weighing during the lifting process, does not
- Affect the loading efficiency, can prevent overloading and under load
- The loading time, unit name, goods name, weight, license number and other data can be printed.
- 240 x 128mm large- screen display, can display the weighing results, the results of weighing system information etc.
- Display and keyboard have a source of background light, are convenient for the night time operation.
- Function of overloading auto-alarm, real-time reminders, to avoid overloading.
- Storage memory, when the electronic scale is shut down, the weighing data can be automatically saved.
- Metal instrument design, anti-janning, it can cover a wide range of operating environment.

## Wheel Loader Scale

WL-T Series

Model	WL - 20T
Max. Capacity	20000 kg
Min Weighing	200 kg
Division	20kg / 50kg / 100kg
Accuracy	+/-1% F.S.
Working Voltage	12 ± 20%VDC
Working Temperature	High temperature proof, can proof 1000°C
Connection of sensors	Used for cables, automatic compensation
Display Large	LCD display
Clock	Real time and date.
Keyboard	Used touch buttons, keys fluorescent settings, suit for night operations



Aczet as one of the leading Industrial weighing & solution company realized many professional customized solutions for all Industrial sectors.

Our cranes weighing system designed to record display and trasmits the lifting load for any make and model of crane. No matter the type of crane prevent us installing such system. We conceptualize, conceive custom designed according to specific crane being used in SMS, Scrape handing, billet and finished product handling. We not only provide weighing solution but also provide state of art technology incorporated in transfer of the data remotely through wireless / GSM / GPRS MODEM / WIFI technology. No matter how critical the solution is Aczet find the right solution with a great involvement in the technology design and implementation from concept to commissioning.

### High Capacity wireless mobile crane weighing system - Capacity : 100 MT

A crane scale combining 2 pieces 100T tension type weigh modules is supplied to weigh. Battery operated digital weigh modules are designed to communicate as wireless with the center display which is a panel PC with touch screen color monitor mounted in an aluminum cast housing. Each module's weight and the total weight are shown with 100kg increments on the center display. The zero keys and x 10display keys on touch screen monitor are used for zeroing and 10kg high resolution indication of scales remotely.

## High Temperature Crane Scale

Hot Metal Ladle Scale Weighing System



### Key Features :

- High accuracy & reliability
- Custom designed to suit specific design and application
- Remote connection through RF / GSM modem
- Hassle free installation, No mechanical and electrical modification
- Wireless communication between the load cell / encoder remove the requirement of cable laying
- High Temperature load pin / Load cell directly installed on the rails, all shielded, suitable to apply in high temperature site.

**Application :** High temperature for SMS and steel melting shop & other application

**Temperature Range :** 100~1600°C